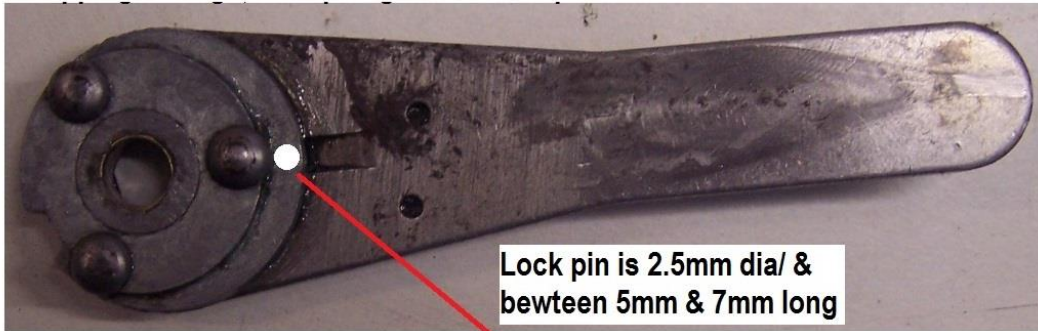


# Wiper motor modification

By Tom – jagschemes

This mod is suited for right hand drive models, when the wiper arm only covers 75% of the drivers Side but will park at the bottom of the driver's side. I made this mod in 2010 so I would have a full Sweep of the windscreen on the driver's side and also return to normal bottom park position. Before you remove the arm be certain it's in the park position at the bottom of the screen driver's side. Follow picture guide below.....feedback results for you are welcome.

**Drill hole through top plate but not fully through indent, this stops the pin from dropping through, a drop of glue will hold pin in the hole.**



**Lock pin is 2.5mm dia/ & bewteen 5mm & 7mm long**

**Eccentric cam in park/off position, 2.5mm hole drilled for a pin to be inserted to lock the cam in place, this will reverse the operation for a R/H/D so the wiper arms will sweep fully to the bottom of the screen on the drivers side & not the passenger side & park as normal.**

